

# Translator Package V1.51

Copyright © 1990-1994, By R. Mark Fleming  
 521 Albert Street  
 Kingston, Ont.  
 Canada, K7K 4M5

E-Mail: <MarkF@post.QueensU.CA>

Revision Date: Feb 15, 2023

## Table of Contents

<b>ShareWare fees and contact with the author:</b> .....	<b>i</b>
Registration Information:.....	i
Contacting the Author:.....	i
Distribution Permission:.....	i
Translator order form / versions list as of April 4th, 1994:.....	ii
AFE Translators version summary:.....	ii
XTND Translators version summary:.....	ii
Standalone application:.....	ii
Standalone Drag & Drop System 7 applications:.....	ii
<b>Introduction</b> .....	<b>1</b>
AppleScript and Scripting is supported is translation applications:	1
Syntax of AppleScript of the script listed for the documented	
applications:.....	1
Installing XTND Translators.....	1
Drag&Drop System 7 Translators:.....	2
Tools for converting MS-DOS & Macintosh disks.....	2
Where to find Apple File Exchange (AFE)?.....	3
Installing Apple File Exchange Translators.....	3
How do I create a MS-DOS disk on Macintosh using AFE?	
.....	3
Copying files between MS-DOS disk & Macintosh disk:	4
AFE Short cuts:.....	4
Converting between Macintosh, IBMpc & UNIX floppies:	
.....	5
Macintosh with Super Drive (FDHD):.....	6
IBMpc Floppy types:.....	6
Macintosh File Creator:.....	6
Macintosh File Type and MS-DOS extension:.....	7
<b>Graphics File Format Reference Section</b> .....	<b>7</b>
StartUp Screens.....	8
MacPaint.....	8
PICT - Macintosh Graphics Files.....	8
EPSF - Encapsulated PostScript Files.....	8
EPS Preview images:.....	9
Not all Postscript file as EPSF files:.....	9
TIFF File format:.....	10
Black-and-white TIFF image format:.....	10
Gray scale TIFF image format.....	10
Palette colour (4-bit and 8-bit) TIFF image descriptions:	10
Full colour (24-bit) TIFF images.....	10
BMP BitMaps.....	11

X11 File format:..... 11  
QuickTime™ ..... 11  
    MooV - Movie file..... 11  
    Picture file Compression..... 11

<b>Graphic Translator Section: AFE, XTND, and Applications.....</b>	<b>13</b>
<b>IBMpc TIFF (Tagged File Format) to Macintosh TIFF v2.0.....</b>	<b>13</b>
Apple File Exchange Translator - ShareWare \$10.00.....	13
<b>IBMpc EPS (Encapsulated PostScript) to Macintosh EPS v2.0</b>	<b>13</b>
Apple File Exchange Translator - ShareWare \$10.00.....	13
<b>StartUp Screen XTND Translator v1.01.....</b>	<b>14</b>
XTND Translator - ShareWare \$10.00.....	14
<b>Windows (.BMP) to PICT Macintosh.....</b>	<b>15</b>
XTND & AFE Translator - ShareWare \$10.00.....	15
<b>Macintosh (SCRN, MacPaint-PNGT, PICT ) to B&amp;W BMP v1.0. .</b>	<b>15</b>
Apple File Exchange Translator - ShareWare \$10.00.....	15
<b>PICT / BMP Translation Version 1.51.....</b>	<b>15</b>
Drag & Drop Application Translator - ShareWare \$15.00.....	15
Application requirements for Drag & Drop Translators:	15
Input file formats supported:.....	16
Output file formats supported:.....	16
Possible Error Messages:.....	16
File menu.....	17
Other Features:.....	17
AppleScript:.....	18
<b>BitMap to EPS &amp; Use Paint Application V3.10.....</b>	<b>19</b>
Drag & Drop Application Translator/Editor - ShareWare \$15.00...	19
Built-in Import Translators:.....	19
Edit Menu.....	19
Paint Tools:.....	20
Options Dialog.....	20
Saving B&W EPS files:.....	20
QuickTime™ - MooV - Movie file.....	20
QuickTime™ Picture file Compression.....	21
<b>Non-Graphic File Translators.....</b>	<b>23</b>
<b>WordStar to Revisable Text Format (RTF) V1.02.....</b>	<b>23</b>
Apple File Exchange Translator - ShareWare \$10.00.....	23
<b>dBase II &amp; III to CSV v1.0.3.....</b>	<b>23</b>
Apple File Exchange Translator - ShareWare \$10.00.....	23
<b>TEXT Converter Application Version 1.50.....</b>	<b>24</b>
Drag & Drop Application Translator - FreeWare.....	24
File Menu options:.....	24
Other Features:.....	25
AppleScript:.....	26
<b>ctc v1.7 (Change Type Creator + change EOLs).....</b>	<b>26</b>
Drag & Drop Application - FreeWare.....	26

Aldus and PageMaker are registered trademarks and TIFF is a trademark of Aldus Corporation.  
 XTND, Copyright © 1989-91 Claris Corporation  
 All other trademarks are the property of their respective holders.

---

*Credits: Aldus Developers' Desk for posting sample TIFF reading code to AppleLink, and Apple for posting sample code to writing PICT 2 file on B&W Macintoshes.*

*Claris for XTND technology interface.*

---



---

**ShareWare fees and contact with the author:**


---

All the translators and programs listed in this document are ShareWare. If you copy and use any of these translator please fill in the registration information below, and send a cheque for the specified amount for each translator used (make cheques payable to: R. Mark Fleming) to:

Att: R. Mark Fleming  
 521 Albert Street  
 Kingston, Ont.  
 Canada, K7K 4M5  
 (613) 545-2039 (work)

An unlimited educational site license is available for \$100.00 / translator. Owners of NetDoctor are license for all translators as described in the NetDoctor's Owner's Manual.

**Registration Information:**

Translator(s): \_\_\_\_\_

Name: \_\_\_\_\_

Company : \_\_\_\_\_

Address: \_\_\_\_\_

City: \_\_\_\_\_ State/Province: \_\_\_\_\_

Zip Code/Postal Code: \_\_\_\_\_

Phone Number: \_\_\_\_\_ Fax: \_\_\_\_\_

Country: \_\_\_\_\_

E-Mail (AppleLink, Internet, Other): \_\_\_\_\_

**Total Payment:** \_\_\_\_\_

**Suggestions:** \_\_\_\_\_

**Contacting the Author:**

You can send request for other translators, bug reports and suggestions to:

e-Mail: MarkF@POST.QueensU.Ca

AppleLink: markf@post.queensu.ca@internet#

If you have problems translating a file using AFE, try starting your computer with the shift-key depressed. This will disable all extensions, until you reboot. If this does not help, please send me e-mail and keep the file you are having problems with, I may need a copy of it to resolve the problem.

**Distribution Permission:**

If you review this program in a magazine, e-mail me with the details or send me a copy of the review (good or bad I like to know). If you wish to re-print section of this document, contact me for written permission.

If you wish to include the complete translation package on a ShareWare CD-ROM, you may, if you notify me that you have include it, and provide detail on how I can get a copy. But you can not charging money for the translation package (you can charge for the

media).

**Translator order form / versions list as of April 4th, 1994:****AFE Translators version summary:**

- |                          |                                     |                   |
|--------------------------|-------------------------------------|-------------------|
| <input type="checkbox"/> | TIFF (IBMpc to Mac) V2.0            | ShareWare \$10.00 |
| <input type="checkbox"/> | EPSF (IBMpc to Mac) V2.0            | ShareWare \$10.00 |
| <input type="checkbox"/> | Windows (.BMP) to PICT V1.02        | ShareWare \$10.00 |
| <input type="checkbox"/> | WordStar to RTF V1.02               | ShareWare \$10.00 |
| <input type="checkbox"/> | dBase II && III to CSV V1.0.4       | ShareWare \$10.00 |
| <input type="checkbox"/> | B&W Bitmap (Mac to IBMpc) BMP V1.00 | ShareWare \$10.00 |

**XTND Translators version summary:**

- |                          |                          |                   |
|--------------------------|--------------------------|-------------------|
| <input type="checkbox"/> | Window (.BMP) V1.10      | ShareWare \$10.00 |
| <input type="checkbox"/> | StartUpScreen V1.01      | ShareWare \$10.00 |
| <input type="checkbox"/> | PC PaintBrush (PCX) V1.0 | ShareWare \$10.00 |

**Standalone application:**

- |                          |                    |                   |
|--------------------------|--------------------|-------------------|
| <input type="checkbox"/> | BitMapsToEPS V3.10 | ShareWare \$15.00 |
|--------------------------|--------------------|-------------------|

**Standalone Drag & Drop System 7 applications:**

- |                          |   |                            |
|--------------------------|---|----------------------------|
| <input type="checkbox"/> | BMP / PICT V1.51 (PPC & 68K)            | ShareWare \$15.00          |
| <input type="checkbox"/> | EPS Preview Converter V1.50 (PPC & 68K) | ShareWare \$15.00          |
| <input type="checkbox"/> | TEXT Converter v1.50 (PPC & 68K)        | Freeware                   |
| <input type="checkbox"/> | ctc V1.61                               | Freeware, source available |
| <input type="checkbox"/> | QT Movie ToolBox V1.20                  | Freeware, source available |

Total ShareWare free: \$ \_\_\_\_\_

Site licenses contact me for pricing (Educational site license available for \$100.00 / translator). Updates will be posted to Info-Mac Archives <info-mac@sumex-aim.stanford.edu>.

**Warranty Disclaimer**

Use of the translation software accompanying your license (the "Software") and its documentation is at your sole risk. The Software and its documentation, are provided "AS IS" and without warranty of any kind and Author & Author 's Licensor(s), (collectively herein referred to as "the Author"), EXPRESSLY DISCLAIM ALL WARRANTIES, EXPRESS or IMPLIED, INCLUDING, BUT NOT LIMITED TO THE IMPLIED WARRANTIES OF MERCHANTABILITY AND FITNESS FOR A PARTICULAR PURPOSE AND AGAINST INFRINGEMENT. The Author DOES NOT WARRANT THAT THE FUNCTIONS CONTAINED IN THE SOFTWARE WILL MEET YOUR REQUIREMENTS, OR THAT THE OPERATION OF THE SOFTWARE WILL BE UNINTERRUPTED OR ERROR-FREE, OR THAT DEFECTS IN THE SOFTWARE WILL BE CORRECTED. FURTHERMORE, The Author DOES NOT WARRANT OR MAKE ANY REPRESENTATIONS REGARDING THE USE OR THE RESULTS OF THE USE OF THE SOFTWARE OR ITS DOCUMENTATION IN TERMS OF THEIR CORRECTNESS, ACCURACY, RELIABILITY, OR OTHERWISE. NO ORAL OR WRITTEN INFORMATION OR ADVICE GIVEN BY The Author OR A The Author AUTHORIZED REPRESENTATIVE SHALL CREATE A WARRANTY OR IN ANY WAY INCREASE THE SCOPE OF THIS WARRANTY. SHOULD THE SOFTWARE PROVE DEFECTIVE, YOU (AND NOT the Author), ASSUMES THE ENTIRE COST OF ALL NECESSARY SERVICING, REPAIR OR CORRECTION. SOME JURISDICTIONS DO NOT ALLOW THE EXCLUSION OF IMPLIED WARRANTIES, SO THE ABOVE EXCLUSION MAY NOT APPLY.

**Limitation of Liability**

In no event shall the author's total liability to you for all damages, losses, and causes of action (whether in contract, tort [including negligence] or otherwise) exceed the amount paid for the Software and its documentation.

## Introduction

This document is a collection of my documentation on Apple File Exchange (AFE) translators, Claris XTND translators and general Drag& Drop (System 7 or later) translation applications I have written.

At the start of this document you will find

- general instruction on using AFE and it's translators
- how to installing Claris XTND translators and application requirements.
- how to installing AFE translators, and tips on using AFE application.
- background information on graphic formats there translation.
- an introduction on using each translator or application.

---

### *Terminology note:*

*Throughout this manual the term **file** and **document** will be used interchangeably. They both mean the same thing a disk file.*

---

## **AppleScript and Scripting is supported is translation applications:**

Use *Script Editor* supplied with AppleScript to read the application's (scripting) dictionary. Script Editor is an application supplied with AppleScript to create and edit AppleScript documents.

---

*Note: The print document Apple Event does not do anything in these translator applications.*

---

## **Syntax of AppleScript of the script listed for the documented applications:**

User comments within the script file are prefixed by two dashes '--' and are in italic font. Key words are in bold font, and literal text are in quotations.

For detailed information on AppleScript refer to the AppleScript manual.

## **Installing XTND Translators**

The XTND Translator work with applications that support XTND technology and "Claris XTND System" interface file to allow them to import "new file formats", by only adding a translator to a folder in the system. This translator needs to be placed in a folder called "Claris Translators" which is inside the folder "Claris" in the System Folder.

Once installed any program that uses Claris's XTND technology to import graphics (ex. File Maker Pro, MacDraw Pro, MacWrite II or Claris Works<sup>1</sup>).

To verify that the translator files are installed properly: check the Claris XTND System is in the *Claris* folder and the translators are in the Claris or the *Claris Translator* folder. If not, install them.

---

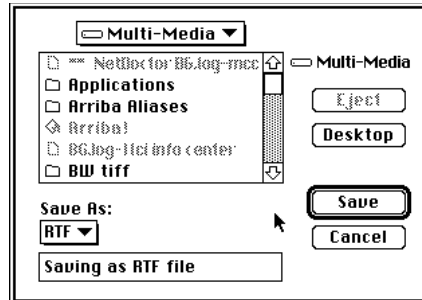
<sup>1</sup>

Not all applications support XTND translators, but many of the newer applications do support it, check your manuals (try under: Importing, Translators, File formats, and Inserting graphics).

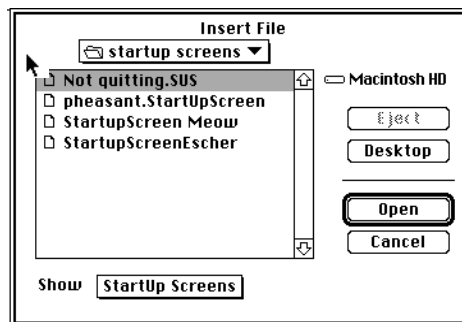


If the XTND filters are not listed, quit the application, then delete two files: XTND Translator List and (if present) Claris XTND Preferences (System 6: in the Claris folder; System 7: in the Preferences folder). Then relaunch the application, select Open or Save As, click on the pop-up menu to see if the translators are listed.

Sample of selecting *Save as...* from ClarisWorks file menu and with the "RTF" translator selected.



Sample of import file dialog box from MacWrite II with only "StartUp Screens" translator selected.



### Drag&Drop System 7 Translators:

If you are using: Access PC, DosMouncer, PC Exchange or can mount a network file server, you can read the IBMpc file from the diskettes and translate the file using the Drag&Drop translator applications (TEXT Translator, PICT / BMP, etc...).

You can use the drag&drop file type setter program *ctc* v1.6 to set the correct Macintosh file type and Macintosh creator.

---

*Note: The Drag & Drop translator have System 7's finder balloon help describing them. Turn Balloon help on, and point at the application's icon while under the finder.*

---

### Tools for converting MS-DOS & Macintosh disks

Apple File Exchange (AFE) is a free Macintosh application (supplied by Apple) for reading and writing IBMpc formatted floppies (see below for information on where to find it).

Suntar is a free Macintosh application for reading and writing UNIX floppies.

MACSEE.EXE is an IBMpc ShareWare application used to read Macintosh 1.4M floppies on IBM PC's.

MacLink Plus is a product that includes a complete set of DataViz translators for AFE, XTND and Macintosh Easy Open which has over 350 translators for translating word-processing documents, graphics, spreadsheets, and database files.

Access PC, DosMounter, or PC Exchange are three products for mounting MS-DOS floppies on the Macintosh desktop. They are an alternative to using AFE to read/write MS-DOS floppies.

### Where to find Apple File Exchange (AFE)?

AFE is not installed with Apple System Software, since it is not usually needed. AFE is stored on the System 7's *Tidbits Disk*, System 6's on the *System Additions Disk*, (2 disk set), or System 6's on the *System Utilities Disk*. (4 disk set).

---

**Note:** Only while you are running AFE, Access PC, DosMounter, or PC Exchange can you insert IBMpc diskettes and read them, **all** other times if you insert an IBMpc diskette in the Macintosh will ask you if you would like to format it, do **not** format it select eject disk.

---

### Installing Apple File Exchange Translators

Place the translator file(s) (eg. "EPSF (IBMpc to Mac)") into the same folder as Apple File Exchange application, the next time you start Apple File Exchange this translator(s) will be available in the "Mac to Mac", the "MS-Dos to Mac" or "Mac to MS-Dos" menus.

---

**Note:** Some translators are not displayed in the "Mac to MS-Dos" menu since they can not provide any translation services from Macintosh to IBMpc formatted diskette.

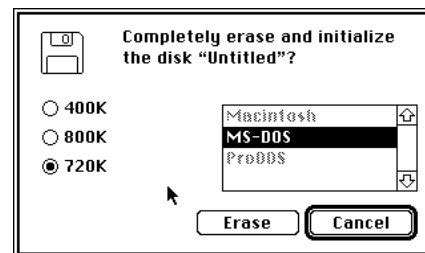
---

### How do I create a MS-DOS disk on Macintosh using AFE?

Start AFE, then insert blank disk. AFE will display one of the following dialog boxes depending on what type of disk you insert (800K or 1.44HD disk). If you insert an already formatted disk you can select *Erase disk...* from the *File* menu, and these dialogs will also be presented.



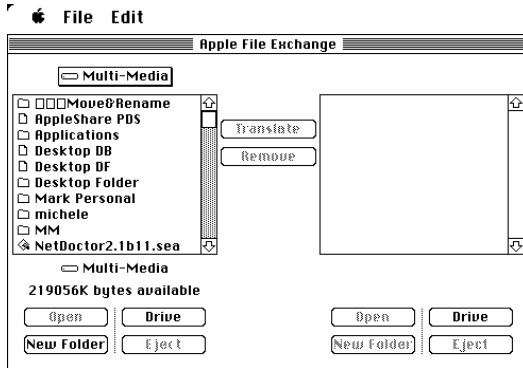
High Density 3 1/2" floppy



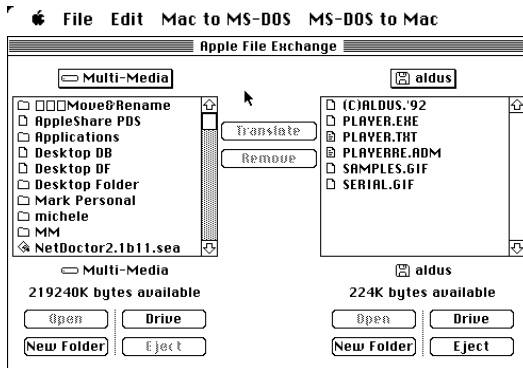
Double Density 3 1/2" floppy

## Copying files between MS-DOS disk & Macintosh disk:

The following dialog boxes and menus on the left will be displayed when you start AFE.



When you insert a MS-DOS disk, the menus will change to the menu list below. The contents of the MS-DOS disk will be displayed in the second window of the dialog.



## AFE Short cuts:

To select more than one file or folder in the directory list of AFE, hold down the COMMAND key and click each file or folder. To select adjacent files and folders, hold down the SHIFT key and click the first and last files or folders.

To stop AFE before all files are converted, click the Cancel button in the progress window or press COMMAND (PERIOD). Files that are already converted remain in the destination disk.

## Sample AFE log message:

---

```

Translating from Mac to Mac, 11/1/91, 10:27:29
CERT2.EPS --> CERT2.EPSt {EPSF IBMpc to EPSF Mac}
File(s) formats:
EPS (Encapsulated PostScript) file size (in Bytes):420416
TIFF (Tagged Image File Format) file size (in Bytes):26406
Translation finished, 11/1/91, 10:28:11

Translating from MS-DOS to Mac, 11/1/92, 13:27:29
COPYTOM.BMP --> COPYTOM.PICT {Windows BMP to PICT}
OS/2 BMP: Width: 475, Height: 228, Depth (Bits per Pixcell):1
Source file size (in Bytes):13742

```

---

---

COPYTO.BMP --> COPYTO.PICT {**Windows BMP to PICT**}  
Windows BMP: Width: 475, Height: 228, Depth (Bits per Pixcell):4  
Source file size (in Bytes):54838

---

---

```
PROGRAMS.DBF --> PROGRAMS.DBF {DBASE II & III to CSV}
dBase III file.
Number of records:264
dBase record size (in bytes):109
```

```
Record formats:
Character field: C,4,PROG
Character field: C,7,PATTERN
Character field: C,15,DRAWING
Character field: C,20,DESCRIP
Date field:      D,8,MODIFIED
Numeric field:   N,3,PINS
Logic field:     L,1,PARTS
```

```
Selected fields translated:
C,4,PROG
C,15,DRAWING
D,8,MODIFIED
N,3,PINS
L,1,PARTS
```

```
Selected translation parameters:
Strip spaces: Yes
Quotes around strings:Yes
Separator Character: Comma
Record #65 Deleted.
Records converted: 264
```

```
Translation finished, 7/17/91, 8:30:51 PM
```

---

### **Converting between Macintosh, IBMpc & UNIX floppies:**

This requires one computer with ability to read and write the two different types of floppy formats or a connection (network or serial cable) between two computer equipped with the two different types of floppy formats is required.

- Converting between floppy disk types within the same computer type is simply a matter of using a computer equipped with disk drive(s) capable of reading and writing the two different floppy types and copying the files. Disk copying will not work correctly, since different type have different storage sizes.
- To convert data from an IBMpc 5 1/4" floppy, you need to be copied on to IBMpc 3 1/2" floppy

Once the data is on a 3 1/2" floppy use AFE to convert/copy the data to Macintosh hard drive or a Macintosh 3 1/2" floppy.

The following table show which formats Macintoshes equipped with Super Driver can read/write from AFE and What formats exist on IBMpc.

**Macintosh with Super Drive (FDHD):**

Storage Size	Media Format
400K	Single sided 3 1/2"
800K	Double sided 3 1/2"
720K (IBMpc Format)	Double sided 3 1/2"
1.4M	High Density 3 1/2"
1.44M (IBMpc Format)	High Density 3 1/2"

**IBMpc Floppy types:**

Storage Size	Media Format
360K	5 1/2"
1.2M	High Density 5 1/2"
720K	Double sided 3 1/2"
1.4M (Macintosh)	High Density 3 1/2"
1.44M	High Density 3 1/2"

AFE can copy a file between MS-DOS and Macintosh disks, or AFE can translate the file (depending on translators installed).

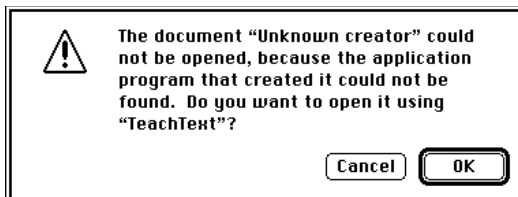
The original file format the file is in and the capabilities of the program you wish to use the file in, dictates what you should do. If the destination application can read (import) the original file format, just use AFE to **copy** the file and then import it into the application.

Most applications can read (or import) and write (or export) different formats, check the application and manuals for your options.

**Macintosh File Creator:**

Each Macintosh application should have registered a four character creator type. Creator types must be unique (but file types need not be unique see below). When a file (or document) is created it is assigned a file type and creator. When you *double click* on a document the operating system (with the help of the finder) attempt to locate the application with the assigned creator. The creator of "?????" is used to identify an undefined creator.

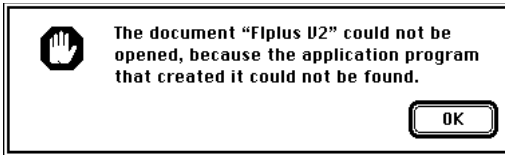
If the application assigned to the creator stored in the file is not available you will receive one of the following dialog boxes<sup>2</sup>. The first knows that TeachText can open the document of this type (in fact TeachText can open file of type: PICT, TEXT or ttxt), and is asking you if it's ok with TeachText.



<sup>2</sup>

Macintosh Easy Open expands on this idea and list all possible application that can read the file format, and all possible applications that the format can be translated into with the install translators. It then lets the user select the application to open that document with.

The following dialog is for document where the file type is uncommon or undefined and the finder does not know of an application to read this document.



In both cases it would be useful to change the creator to an application you have, and in the second case discover what type of file it is. The application "ctc V1.6" is an application designed to change the creator and type and look at the start of the file to try and determine the correct file type. (See: ctc section later in this document).

### Macintosh File Type and MS-DOS extension:

The Macintosh assigned a four character file type to each and every file it creates, this file type is like the MS-DOS file name extensions. It is designed to identify the type of file the computer has stored. Since other operating system do not have this file type concept, when you transfer file form foreign operating system to the Macintosh you may need to set these file type to allow program to read them.

Macintosh Type	MS-DOS extensions	Description
APPL		.EXE Macintosh applications and IBMpc executable (Macintosh application will no run on IBMpc and IBMpc .EXE file will not run on Macintosh)
TEXT		.TXT,.DOC ASCII Text file (.DOC is also used by may word processors to indicate document file other than text files).
TEXT, EPSF	.PS	PostScript file.
EPSF	.EPS	Encapsulated PostScript file.
TIFF	.TIF	Tagged Image File Format
GIFf		.GIF Graphic Interchange File Format
PICT		.PIC Macintosh picture file, MS-DOS extension get used for other format of graphics file too.
MooV		.MOV QuickTime movie.
JPEG, JFIF		.JPG JPEG file.
BINA, BMPp		.BMP Window's BitMap format

---

## Graphics File Format Reference Section

Graphics translation is NOT a trivial task different formats have different attributes (BitMap Depth, Color BitMaps, Color Tables, Vector Graphics, PostScript Description, Object Oriented, etc...). The following section contains information about several graphic formats. It is not a complete specification of the graphic format, only an outline to help choose the correct conversion process for your needs. Selecting the wrong format result in loss in quality or ability to edit the resulting image.

On the Macintosh PICT file is a standard object oriented native picture format for all Macintosh applications. A BitMap is one possible object in a PICT file (other object include: Text, BitMaps, lines, circles, regions, fill patterns, etc..). All programs that use, graphics on

the Macintosh can use PICT files, but not all program can edit, objects in the PICT files, some programs convert them to BitMaps.

On the IBMpc BMP bitmap format is a standard format used by Microsoft Window 3.1.

The problem is that MS-DOS programs don't use the PICT format, and Macintosh may or may not be able to use BMP format.

To resolve this conflict, you need to convert it to a compatible format.

Conversion examples:

- PICT to BMP (looses object oriented information).
- BitMap to BitMap (Some common Black & White bitmap formats: .BMP, .PCX, MacPaint, & B&W TIFF).
- Color BitMap to Black & White BitMap (dither or threshold?)
- TIFF to BMP or TIFF to PICT  
(Problems: Resolution?, B&W or Color?, number of colors 4, 16, 256, 16 Million).
- JPEG compression.

## StartUp Screens

B&W StartUp Screens are bitmaps with a size of 512 by 342. The bitmap is stored on disk uncompressed. Colour StartUp Screens are PICT resources with ID=0 and can be any size.

Macintosh File Type of:     SCRN

MS-DOS extension:

## MacPaint

MacPaint bitmaps are compressed black & white bitmaps with a size of 576 by 720.

Macintosh File Type of:     PNGT

MS-DOS extension:

## PICT - Macintosh Graphics Files

PICT file are the Macintosh native picture format. It is storable as a resource of type 'PICT' or as a data file of type 'PICT'. It is object oriented, and contains all the quick draw commands used to draw the image on the Macintosh screen (Font: Size, Style, type; Lines, circles, BitMaps, etc...).

If QuickTime is install, JPEG compression/decompression is supported.

- The preview image is stored in the files as a PICT resource file.
- Custom ICON's are created and stored in the resource file which System 7 finder will display.

Macintosh File Type of:     PICT

MS-DOS extension:     .PIC

## EPSF - Encapsulated PostScript Files

Encapsulated PostScript files are special PostScript programs with a special header describing the width and height of the image and how to place it on the page. This header



allows other applications to blindly include the image, and rotate, scale, place it in the correct position of it's document for printing or displaying on postscript device.

### EPS Preview images:

There are three different file format used to store EPS preview image. They are:

- a preview image are stored in a 'PICT' resource ID 256 in the resource fork of the Macintosh file.
- a preview image as a hex dump of the image as postscript comments in the EPSI file.
- a MS-DOS preview image of a TIFF or Windows Metafile place before or after EPS code. A 24 byte binary header describes the offset and size of the PostScript program and the type of preview image and it's offset and size.

Many IBMpc software packages do **not** create true EPSF files your EPS file should start/end with something like this (not all comments { ie. lines starting with %%} are needed):

---

```

%!PS-Adobe-X.0 EPSF-X.0
%%Creator: Windows PSCRIPT
%%Title: Document2 name
%%BoundingBox: 18 19 593 774
%%DocumentNeededResources: (atend)
%%DocumentSuppliedResources: (atend)
%%DocumentFonts: (atend)
%%DocumentNeededFonts: (atend)
%%EndComments

....

%%Trailer
%%DocumentSuppliedResources: procset Win35Dict 3 1
%%DocumentFonts: Times-Roman Times-Italic
%%DocumentNeededResources:
%%DocumentNeededFonts: Times-Roman Times-Italic
%%EOF

```

---

*Note: Items listed after: %%DocumentNeededResources and %%DocumentNeededFonts are possible problems. If the fonts listed are NOT in the printer then you need to include them in the EPSF file or download them to the printer. If the ProcSets listed in %  
**%%DocumentNeededResources** must be downloaded or inserted in the file at the location of the **%%InsertResource: <xxx>** comment.*

---

### Not all Postscript file as EPSF files:

The following postscript operators can **NOT** be used in EPSF files (if they are then the file is not a true EPS file):

---

```
banddevice, exitserver, initmatrix, setshared, clear, framedevice, quit, startjob,
cleardictstack, grestoreall, renderbands, copypage, initclip, setglobal, erasepage,
initgraphics, setpagedevice
```

---

The following operators can be used **with care**:

---

```
nulldevice, sethalftone, setscreen, undefinefont, setgstate, setmatrix, settransfer
```

---

Macintosh File Type of: EPSF or TEXT

MS-DOS extension: .EPS

*For more information see:*

*PostScript Language Reference Manual, 2nd, Adobe Systems Inc., Addison-Wesley Publishing Company, Inc. ISBN 0-201-18127-4*

---

**TIFF File format:**

TIFF file have many formats: Black and white, gray scale, full color (24-bit), and palette color (4-bit and 8-bit) images. TIFF files support the uses of data compression using: LZW, PackBits, and CCITT 1D compression (PackBits and CCITT 1D are allowed on black-and-white images only), LZW can be used with any image type.

To complicate matters, two byte orders are supported: 'II' (Intel) and 'MM' (Motorola), as indicated by the TIFF file header.

The following is a short description of TIFF file formats and their usage.

**Black-and-white TIFF image format:**

The image on the left save as different types compressed E  
TIFF files take up different amounts of space.

- no compression (3042 bytes)
- CCITT 1D-compressed (2931 bytes)
- PackBits-compressed (1974 bytes)
- LZW-compressed (1310 bytes)

Note: file size varies, but image quality does not vary.

---

*Special note: halftoned image are a special type of B&W image.*

---

As with all halftoned images, it won't look very pretty in PageMaker or on the screen, due to resampling and the 300-vs-72 dpi mismatch, but it will print fine unless you change the size (or scale it).

**Gray scale TIFF image format**

Gray scale image, are much better and more flexible format to save picture in than the equivalent halftone image. They can be re-scale, displayed on the screen and printed with no major problems. Note that a 8-bit gray scale scans at 72 dpi or 150 dpi is more than adequate resolution for printing on 300 dpi and 600 dpi printers. The printer has to convert the Gray scale information into a B&W halftone image to print it ..

**Palette colour (4-bit and 8-bit) TIFF image descriptions:**

Palette colour lookup tables describe the set of colours in the picture. User can scale them, and print them the same way Gray scale TIFF image can be scaled.

**Full colour (24-bit) TIFF images**

Independend R,G,B 8 bit colour channels. Currently not support by this version of the translator.

Macintosh File Type of: TIFF  
MS-DOS extension: .TIF

---

*For more information on TIFF file format see the TIFF V6.0 file specifications which is available from Aldus Corporation and on AppleLink in Aldus's folder.*

---

## BMP BitMaps

BMP BitMaps are file like TIFF files they are bitmaps. The BMP format is the standard bitmap format for Microsoft Windows. The header of the BMP file tell the program what type of graphic image is within the file: That is, is it: B&W bitmap, 16 color bitmaps, 256 color bitmaps and 24 bit color bitmap.

There are two different header formats: OS/2 & Windows V3.0 & V3.1 (.BMP) formatted files.

Macintosh File Type of: BINA, BMPp  
(JPEGView autotyper set the typep to 'BMPp', 'BINA' is AFE default binary type.)  
MS-DOS extension: .BMP

## X11 File format:

The width and height of the bitmap are written as preprocessor symbols at the beginning of the file. The bitmap image is then written as an array of characters.

Here is an example of a bitmap file whose image spells X11.

---

```
#define name_width 11
#define name_height 5
static char name_bits[] = {
    0x91, 0x04, 0xca, 0x06, 0x84,
    0x04, 0x8a, 0x04, 0x91, 0x04
};
```

---

Macintosh File Type of: TEXT

## QuickTime™

### MooV - Movie file

Played by QuickTime capable programs. You can use all the standard edit menu functions (Cut, Copy, Paste, and Clear), but only resources of type "MooV" can be pasted into a movie.

---

*Note: This option requires QuickTime Extension to be installed in the System Folder (System 7 or later in Extensions folder).*

---

Macintosh File Type of: MooV  
MS-DOS extension: ".MOV"

### Picture file Compression

QuickTime comes with routines for compressing files. Any application that uses PICT files on Macintosh with QuickTime installed can de-compress these files.

- The preview image is stored in the files as a PICT resource file.

I did not write the QuickTime code. Most of it is from Apple's sample code, repackaged to work with this application. The Movie playing is from "Mini Edit Movie Stuff.c" and Compression code is from "SampleCompressPicture.c" both slightly modified. Thank you

QuickTime development team & Apple DTS.

- Custom ICON's are created and stored in the resource file which System 7 finder will display.

---

## Graphic Translator Section: AFE, XTND, and Applications

---

### IBMpc TIFF (Tagged File Format) to Macintosh TIFF v2.0

Apple File Exchange Translator - ShareWare \$10.00

Copyright © 1990-1993, By R. Mark Fleming

*History..*

*V1.0.0 Created from EPSF translator.*

*V2.0 RMF Added Translation of TIFF to PICT option.*

---

To support AFE "Show only eligible files" option this translator checks the start of the file to filter out non-TIFF files. Only files starting with 'MM' or 'II' which is the correct header information for TIFF image will be listed as eligible files.

To set the options select the TIFF IBM to Mac translator from Apple File Exchange's menu. It will bring up the following dialog box:



Some applications allow only TIFF as a file type. Use this translator to set the Macintosh file type to TIFF. The other option is to translate the file from the TIFF file to Macintosh PICT file. Set the document file creator of your choice.

---

*Note: Not all TIFF (Tagged Image File Format) are the same, this AFE translator will read most formats of TIFF file defined in TIFF V5.0, it will not read TIFF RGB & new formats supported in TIFF V6.0.*

---

TIFF file have many formats, these format are a result of different color requirements and types of data compression used to store the data (see TIFF File format section for more detail).

---

## **IBMpc EPS (Encapsulated PostScript) to Macintosh EPS v2.0**

**Apple File Exchange Translator - ShareWare \$10.00**

Copyright © 1990-1993, By R. Mark Fleming

*History..*

*V1.0.1 Fix minor bug in missing EOF on ASCII text files, & added information about EPSF files in this document.*

*V1.0.2 Added code to support AFE "Show only eligible files" option.*

*V2.0.0 Added options to add the PostScript command, convert TIFF preview image.*

---

This translator check the start of the file to support AFE "Show only eligible files" option. Only files with "%!" or correct binary EPSF header will be listed as eligible files.

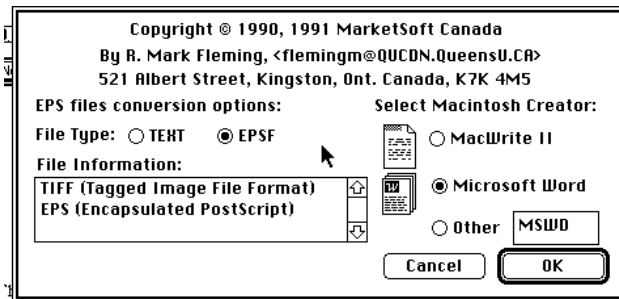
You can set the Macintosh file type and creator. Some applications allow only file of Macintosh type 'EPSF' as a file type, some also allow 'TEXT' as a file type. Setting the file type to TEXT allows you to read the file into a word processor (or BBEdit a very good text editor) and check if it is a True EPSF file (see discussion at the end of this document).

Encapsulated PostScript File (EPSF ) on the IBMpc come in two formats:

- Plain ASCII files (with or without EPSI preview image),
- EPSF with binary header that describes the EPSF's PostScript commands and preview image (TIFF or Metafile) section of the file.

This translator will accept both types of file and produce a EPS file on the Macintosh with preview image (if one existed as a TIFF preview image) or without the preview image. The TIFF preview image is converted to a Macintosh EPSF PICT preview images (sorry no option to convert Window's META preview image or EPSI preview images).

The following dialog window is display, for each selected EPS file. It can be used to select the Macintosh file type and creator.



An option to add the PostScript command "showpage" to end of EPSF file is available. This allows you to send EPSF file to printer without imbedding them into another document to print them. The showpage command is disable when an EPSF file is imbedded into another file, so it does not matter if you include it, some application automatically include it when they create an EPSF file, other don't.

---

*Note: The showpage, may not work as you expect, depending on where the EPS file is located on the page, some EPS file will be drawn off the page, and will print unless place within a document as a blank page.*

---

## StartUp Screen XTND Translator v1.01

**XTND Translator - ShareWare \$10.00**

Copyright © 1990-1993, By R. Mark Fleming

*History...*

*V1.0.0 Created import filter for B&W Startup screen released as Freeware.*

*V1.0.1 Updated to support B&W Startup screen & Color Startup screens released as ShareWare.*

---

It was created from the skeleton of Claris XTND sample code for a MacPaint XTND translator. Once installed any program that uses Claris's XTND technology will be able import B&W startup screen and Color startup screens.

The B&W startup screens are usually created from MacPaint document (with a file type of: SCRN) and the size of a MacPlus or SE's screen (512 by 342). Color startup screens are created by programs such as PhotoShop, or Giff Converter and contain a color PICT resource that contains the screen image to display.



---

## Windows (.BMP) to PICT Macintosh

### XTND & AFE Translator - ShareWare \$10.00

Copyright © 1990-1993, By R. Mark Fleming

*History:*

*V1.02* Fix bug with converting multiple files, Fix color table bug and Added support for OS/2 BMP files, Mapped file name extension .BMP to PICT and added BMP Eligible files filter routine.

---

Once the XTND translator is installed any program that uses Claris's XTND technology to import graphics will be able import B&W & 16 color format BMP graphics

The AFE translator converts B&W, 16 and 256 Color bitmaps OS/2 (.BMP), Windows V3.0 & V3.1 (.BMP) formatted files to Macintosh PICT formatted files.

A copy of the last file it translates is left in the Clipboard, ready to paste into another application.

All other .BMP formats are not supported at this time.

The resulting file is a Color PICT file.

---

*Also see:*

*PICT / BMP Translator*

---



---

## Macintosh (SCRN, MacPaint-PNGT, PICT ) to B&W BMP v1.0

### Apple File Exchange Translator - ShareWare \$10.00

Copyright © 1990-1993, By R. Mark Fleming

*History...*

*V1.0.0* Created

---

Place the "**(Mac to IBMpc) BMP**" file into the same folder as Apple File Exchange application, the next time use start Apple File Exchange this translator will be available in the "Mac to MS-Dos" menu.

This translator check the start of the file to support AFE "Show only eligible files" option. Only files of type 'SCRN', 'PNGT', and 'PICT' will be listed as eligible files.

---

*Also see:*

*PICT / BMP Translator*

---

---

## **PICT / BMP Translation Version 1.51**

**Drag & Drop Application Translator - ShareWare \$15.00**

Copyright © 1990-1994, By R. Mark Fleming

*History..*

*V1.1.0 Released to public*

*V1.2.0 Added Saving Preferences.*

*V1.3.0 Added TIFF, PGNT, SCRN translation support.*

*V1.5.0 Added native Power Macintosh support, support for alias to preference files and support for pasting pictures*

*V1.51 Fix paste bug, fix possible bug with drawing preview image, added convert to clipboard option*

---

### **Application requirements for Drag & Drop Translators:**

Requires system 7 or later, and Macintoshes that support Color QuickDraw (sorry not Macintosh Plus, or Macintosh SE's, etc...) and enough memory to copy the input graphics file into memory.

AppleScript is required for AppleScript scripting support.

### Input file formats supported:

Input files of type "PGNT" are Macintosh B&W Bitmap paint files. They can be converted to Window's BMP or Macintosh PICT depending on the preference settings (see below).

Input files of type "SCRN" are Macintosh startup screen files. They can be converted to Window's BMP or Macintosh PICT depending on the preference settings (see below).

"TIFF" input files can be converted to Window's BMP or Macintosh PICT depending on the preference settings (see below).

Input files of type "PICT" are native Macintosh graphics file; they may be black & white or color. They will be converted into a bitmap and translated into Window's BMP file format.

If the input files are in Window's BMP file format they will be converted into Macintosh PICT files. The Window bitmap graphics files may be Black & White, 16 color or 256 color bitmaps.

The graphics document created by the application has two icons that indicate what translation has taken place, and what format the file is in.

### Output file formats supported:

**BMP** The program graphics file with the following icon indicates a translation from Macintosh PICT file format to Window's BMP file format. The suffix ".BMP" also

indicates it is in Window's BMP bitmap format.



Note if the source file has the suffix ".PICT" it will be converted to the ".BMP" suffix.

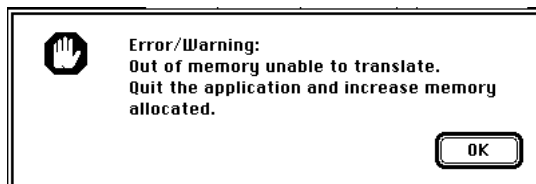
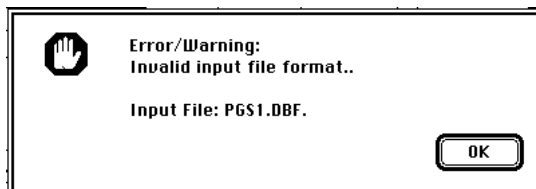
**PICT** The program graphics file with the following icon indicates a translation from Window's BMP file format to Macintosh PICT file format. The suffix ".PICT" also

indicates it is in Macintosh PICT format.



Note if the source file has the suffix ".BMP" it will be converted to the ".PICT" suffix.

### Possible Error Messages:



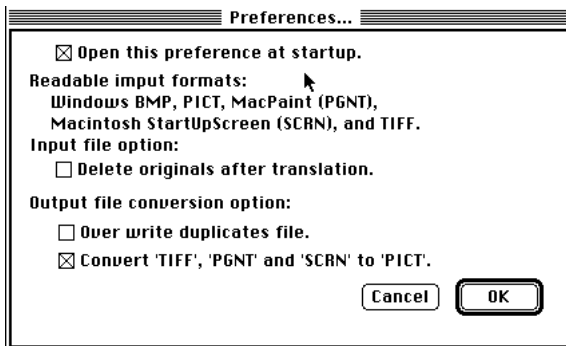
## File menu

**Open...** Selecting “Open...” from the file menu prompts a user to select the file of type “PICT” to be translated. This has the same affect as an user dropping a Macintosh PICT file on to the application’s icon. It will result in the PICT file being converted into a Window’s BMP file using the current preference settings.

PICT format input file name translation is handled as follows:

- If the file name ends in the suffix “.PICT” (case does not matter), this suffix will be deleted.
- The suffix “.BMP” will be added to the end of the file name.
- If the file name is too long, “.BMP” will replace the last 4 characters of the file name.

**Preference...** Selecting “Preference...”, displays the following dialog box:



Option to set file creator, to allow you to “Double Click” on the document to launch the correct applicaiton.

Option to delete the source file, if the translation completes with no errors.

Option to overwrite destination file, if duplicate file name results from selected input file. If this is *not* checked off, and the user is *not* pressing the Option key down, the user will be prompted for new destination name.

The *ESC* key can be used instead of pressing the *Cancel* button, and the *Return* or *Enter* key may be used instead of the *OK* button.

**Quit** Exits the application.

## Other Features:

Support’s System 7’s Drag & Drop of Macintosh PICT files for conversion to BMP files, and Window’s BMP files for conversion to Macintosh PICT files.

System 7’s Finder Balloon Help string is installed.

**AppleScript:**

This application only currently supports the Required Suite. The following AppleScript script converts all the PICT or BMP file in a given folder, and sub-folders into Window's BMP files or Macintosh PICT files.

```
-- The Open handler is called by AppleScript
-- when objects are dropped on the droplet in the Finder.
-- Get the list of folders/files given to the script and process them one at a time.
on open objList

    tell application "PICT / BMP" to activate --Bring the program the to front

    repeat with objRef in objList
        ProcessObject(objRef as string) -- process each file in each folder and each folder
    end repeat

    tell application "PICT / BMP" to quit -- Quit the translation program

end open

on ProcessObject(obj)

    set al to alias obj

    if folder of (info for al) then -- Make sure we have a folder
        -- Process contents of folder
        repeat with objRef in (list folder al)
            ProcessObject((al as string) & (objRef as string))
        end repeat

    else -- Use the external PICT / BMP application to convert the files

        tell application "PICT / BMP"
            activate
            open file obj -- Translate on file at a time
        end tell
    end if

end ProcessObject
```

---

*Also see:*

*BMP to PICT XTND & AFE Translator*

---

---

## BitMap to EPS & Use Paint Application V3.10

### Drag & Drop Application Translator/Editor - ShareWare \$15.00

Copyright © 1990-1993, By R. Mark Fleming

#### *BitMapToEPS History...*

*Version 1.0 - EPS, MacPaint, and PICT reading routines*

*Version 1.1 - Added Claris XTND interface to allow for external Translators.*

*Version 2.0 - Changed name to: "BitMapsToEPS", Added QuickTime support.*

*Version 2.0.1 - Set selection rectangle to the whole image of the picture is opened.*

*- added QuickTime Preview & Opening of PICT files*

*- added rotation of selected area, and support for B&W paste option.*

*Version 2.0.2 - Added Help Item to System 7 Help menu*

*Version 2.1 - Added simple B&W Paint tools, and cleaned up code.*

*- Added internal import filter for .BMP (Windows & OS/2) BitMaps*

*Version 3.0 - Added EPSI (Encapsulated PostScript Independed) output code.*

*If Macintosh Preview is not selected EPSI is output.*

*- Added reading B&W TIFF images (uncompressed TIFF,*

*LZW compressed TIFF, PackBits compressed TIFF, and CCITT 1D compressed TIFF)*

*- Added reading 4 & 8bit Grey Scale TIFF images (uncompressed TIFF,*

*LZW compressed TIFF, and PackBits compressed TIFF)*

*- Added reading 4 & 8bit Palette TIFF images (uncompressed TIFF,*

*LZW compressed TIFF, and PackBits compressed TIFF)*

*- Enable option not to convert to B&W.*

*- Added Auto Save function to aid file format conversion.*

---

Converts the following Macintosh file formats to B&W Encapsulated PostScript Files (EPSF) or B&W PICT files:

#### **Built-in Import Translators:**

- MacPaint (B&W BitMap, 576 by 720)
- StartUp Screens (B&W BitMap, 512 by 342)
- PICT files (converted all PICT's to B&W BitMaps).
- .BMP (Windows & OS/2) BitMaps.
- QuickTime Movie player (when QuickTime is installed).
- B&W, Gray Scale & Palette TIFF images (uncompressed TIFF, LZW compressed TIFF, PackBits compressed TIFF, and CCITT 1D compressed TIFF)

See below for more detail description of file formats.

Supports XTND translators for importing graphics format as PICT's. This requires "Claris XTND System" file, which comes with all Claris products and some other 3rd Party products.

Click and Drag the selection rectangle in the picture to mark the area to be saved or edited. Use "Select all" from the Edit menu to save the whole image.

#### **Edit Menu**

Use Cut to copy the area in the selection rectangle to PICT in the Clipboard, and erase the selected area.

Use Copy to copy the area in the selection rectangle to PICT in the Clipboard.

Use Paste to paste a PICT at the top, left corner of the selection rectangle. If the option key is depressed, the picture is scaled to the selected rectangle.

Use Clear to erase the selected area.

Use Select All to select the entire image.

Use rotate to rotate the selected area 90 degrees clockwise, the rotated image becomes the selected area. Hold down the option key to retain the old selected area.

### **Paint Tools:**

Pen - draw in current pen pattern & width.

Eraser - Erase an area of the picture.

Line - draw lines.

Selection rectangle - select the area to cut, copy, clear or rotate.

Draw rectangles, round corner rectangles, and ovals in current pen pattern, width. If filled tool fill in current fill pattern.

Hold the option key down while painting to "Or" the line, rect, etc. with background image.

### **Options Dialog**

Use the "Preferences..." item in the Edit menu to set preferences.

This application support's System 7.0 "document dropping" feature. To use this feature, drag one or more documents you would like to view onto the application, and release the mouse button when it is hi-lighted.

The option to convert Color to B&W bitmap, is normally enabled. If it is not checked off, you can save a Color PICT of the image and also display the color version of the B&W image, but no editing. Holding down the Option key will scale the image to the size of the current window.

The Auto Save function is to aid in file format conversion. When select a file to be opened either by 'Drag & Drop' or Open menu item. The auto save function will automatically prompt you to save the file under the last file format you used.

Default format is PICT, if you have not saved one.

---

*Note: Last format saved will be checked off in the save sub-menu.*

---

Current version does NOT include:

- the option to copy EPS file in the clipboard.
- No option to convert Color PICT to Gray Scale EPS BitMaps.
- No option to save Color Windows .BMP files.

### **Saving B&W EPS files:**

The selected area of the bitmap is saved as a Black & White bitmap in an EPS file format. This program only creates Macintosh 'PICT' preview images, selectable from the Options Dialog box.

### **QuickTime™ - MooV - Movie file**

The Open... item in the File menu will play the selected QuickTime movie, in its own window. You can use all the standard edit menu functions (Cut, Copy, Paste, and Clear), but only resources of type "MooV" can be pasted into a movie.

---

*Note: This option requires QuickTime Extension to be installed in the System Folder.*

---



**QuickTime™ Picture file Compression**

QuickTime comes with routines for compressing files. Any application that uses PICT files on Macintosh with QuickTime installed can de-compress these files.

I did not write the QuickTime code. Most of it is from Apple's sample code, repackaged to work with this application. The Movie playing is from "Mini Edit Movie Stuff.c" and Compression code is from "SampleCompressPicture.c" both slightly modified. Thank you QuickTime development team & Apple DTS.

---

## Non-Graphic File Translators

---

### WordStar to Revisable Text Format (RTF) V1.02

**Apple File Exchange Translator - ShareWare \$10.00**

Copyright © 1990-1993, By R. Mark Fleming

*History...*

*V1.0 First Released.*

*V1.0.1 Fix bug with closing off wrong resource file.*

*V1.0.2 Fix bug where it would sometime enter into an infinite loop (reported by: almstrum@cs.utexas.edu <Vicki L. Almstrum> thank you, your sample file helped!).*

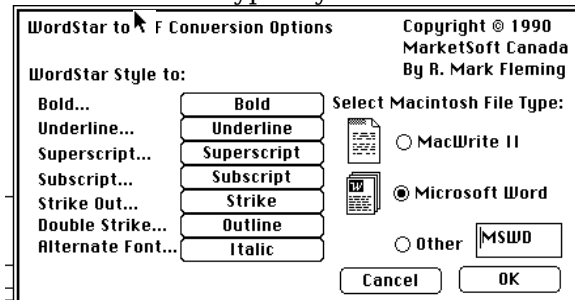
*Change the destination file name to end in: ".RTF", if 3rd or 4th from last character is "."*

---

This translator converts WordStar file to MicroSoft™ Revisable Text Format (RTF). The following word processors can read the RTF format (other do too...):

Microsoft Word V3.0-V5.0 & Microsoft Works, MacWrite II, Claris Works and WriteNow.

Selected the WordStar to RTF item from the menu, will bring up the following dialog box, to select how the different WordStar type styles are converted:



This program will not convert WordStar "Dot" commands they are automatically listed in the Apple File Exchange log file. Print the log file, and then use a word processor's search function to locate the imbedded "Dot" commands in the translated file. The AFE about box for this translator contains a description of these dot commands.

---

## **dBase II & III to CSV v1.0.3**

**Apple File Exchange Translator - ShareWare \$10.00**

Copyright © 1990-1993, By R. Mark Fleming

*History..*

*V1.0.1 Released to public*

*V1.0.2 Add list of selected field converted to user log & placed correct message in AFE dialog box (only happened if other AFE translators were open).*

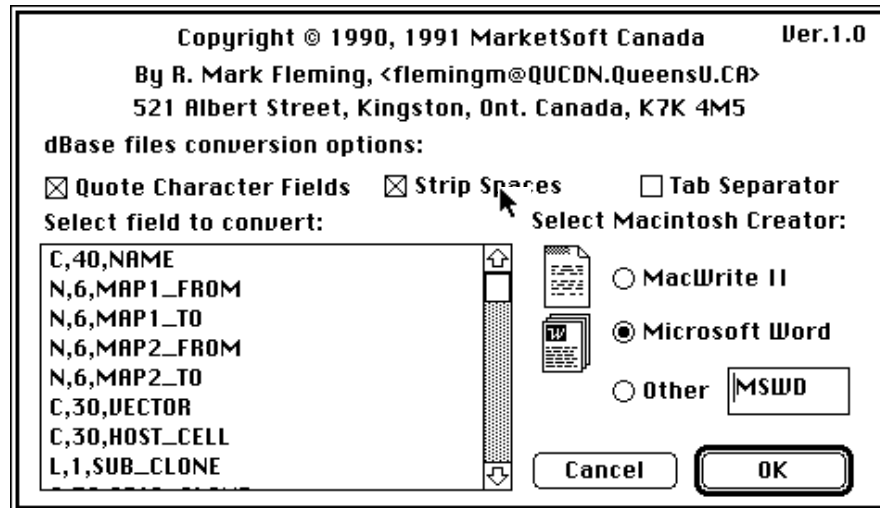
*V1.0.3 Fix field alignment problem, and bug which could case a bus error sometimes. Add more information to the log file (deleted records, options used in translation).*

---

dBase II and dBase III database file can be converted into Comma Separated Values (CSV). This format is useful for importing into MS Word Mail merge, FileMaker, Excel, and other spread sheet packages.

The following dialog window is display, for each selected dBase file. It is used to select the dBase field that you wish to translate.

Use *shift-click* to select range of fields, *command-click* to select additional fields and *click and drag* to select a group of fields.



The above dialog window also lets you select the file creator type, this allow you to *double click* document that you translated to lunch that application.

The three check boxes allow the user to change the format of the output file. When “Quote Character Fields” is check, any dBase field of type ‘C’ will have Quote (”) around the field’s content. When “Tab Separator” is check, a Tab character (ASCII 9) will be used to separate field instead of a comma (,). When “Strip Spaces” is check, any spaces before a number field, and any trailing space of a character field will be removed.

dBase Field Types:

- C Character (Text field)
- N Numeric (decimals & integers)
- D Date (output as: YYYY/MM/DD)
- L Logic (? = undefined, Y/N, T/F )
- M Memo (they are not converted).

---

## TEXT Converter Application Version 1.50

### Drag & Drop Application Translator - FreeWare

Copyright © 1993, All Rights Reserved, By R. Mark Fleming

*History...*

*V1.1.0 Released to public*

*V1.2.0 Added Saving Preferences and added new preference options*

*V1.3.0 Added EBCDIC translation support.*

*V1.5.0 Added native Power Macintosh support, support for alias to preference files and option to set file creator.*

---

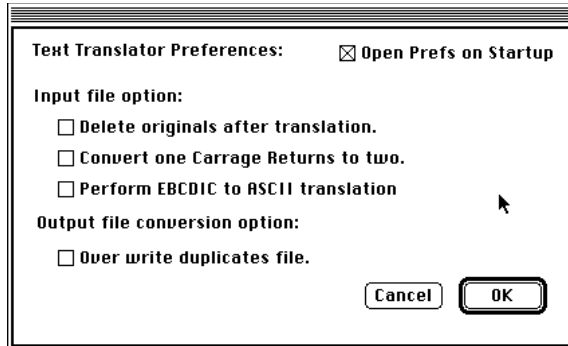
**Requirement:** *System 7 or later... and enough memory to copy the input text file into memory.*

---

### File Menu options:

**Open...** Selecting “Open...” from the file menu prompts a user to select the file of type “TEXT” to be translated. This has the same affect as an user dropping a Macintosh TEXT file on to the application’s icon. It will result in the TEXT file being converted into a 7 bit ASCII TEXT file using the current preference settings (See below for list of translated characters).

**Preference...** Selecting “Preference...”, displays the following dialog box:



Option to delete the source file, if the translation completes with no errors.

Option to convert EBCDIC text file (found on IBM mainframe/ IBM mini-computers) into ASCII text files. The external file: etoa.tbl contain the translation used, and must be located in the same folder or in the system folder when use the EBCDIC translation.

Option to overwrite destination file, if duplicate file name results from selected input file. If this is *not* checked off, and the user is *not* pressing the Option key down, the user will be prompted for new destination name.

The *ESC* key can be used instead of pressing the *Cancel* button, and the *Return* or *Enter* key may be used instead of the *OK* button.

**Quit** Exits the application.

### Other Features:

Support's System 7's Drag & Drop of Macintosh TEXT files to perform the conversions.

System 7's Finder Balloon Help String.

Macintosh extended ASCII Character set to 7 bit ASCII Character set

™, ®, ©, •, -, —, …, “, ”, ‘, ’	(TM), (R), (C), *, -, --, …, ", ", ', '
Æ, æ, œ, Œ	AE, ae, oe, OE,
á, é, í, ó, ú	a, e, i, o, u
ä, ë, ì, ò, ù	a, e, i, o, u
â, ê, î, ô, û	a, e, i, o, u
<b>à, è, ì, ò, ù</b>	<b>a, e, i, o, u</b>

---

*Note:* All carriage return are converted to two carriage returns. Soft carriage returns (shift-return) are converted to spaces.

---

**AppleScript:**

This application only currently supports the Required Suite. The following AppleScript script converts all the TEXT files in a given folder, and sub-folders.

---

```
-- The Open handler is called by AppleScript
-- when objects are dropped on the droplet in the Finder.
-- Get the list of folders/files given to the script and process them one at a time.
on open objList
    tell application "TEXT Converter" to activate --Bring the program the to front
    repeat with objRef in objList
        ProcessObject(objRef as string) -- process each file & folder in each folder
    end repeat
    tell application "TEXT Converter" to quit -- Quit the translation program
end open
on ProcessObject(obj)
    set al to alias obj
    if folder of (info for al) then -- Make sure we have a folder
        -- Process contents of folder
        repeat with objRef in (list folder al)
            ProcessObject((al as string) & (objRef as string))
        end repeat
    else -- Use the external TEXT Converter application to convert the files
        tell application "TEXT Converter"
            activate
            open file obj -- Translate on file at a time
        end tell
    end if
end ProcessObject
```

---

**ctc v1.7 (Change Type Creator + change EOLs)****Drag & Drop Application - FreeWare**

Copyright © 1993-94, All Rights Reserved, By R. Mark Fleming

History...

v1.4 ChangeTypeCreator.c Written by Brian Bechtel, based on code by Juri Munkki

Change the file type and creator of any file dropped onto this program. Prompts for the file type and creator, and changes all files dropped at the same time to the same type and creator.

v1.5 Modified by Pete R. Jemian <jemian@tmnxt1.iit.edu>, Late-Nite(tm) Software, EOL code.

added an option to convert TEXT files to the chosen system of EOL (end-of-line) characters. Very useful for moving TEXT files between DOS, Mac, and UNIX machines by diskNet (copy file onto disk, remove disk, sneaker it to other machine,

v1.6 Sections rewritten and Modified by Mark Fleming <MarkF@Post.Queensu.CA> General restructuring and cleanup of code, added enhanced display of current creator and type.

- Added code to EOL code to use Finder temporary Memory and only change file of type 'TEXT'

- Added error checking and reporting routine

- Added Balloon Help for System 7's finder

v1.7- Added auto suggesting of correct file types for:

Format of the file (creator) - File Type

PICT files (txt-TeachText) - PICT

PhotoShop V2.5 files (8BIM) - 8BPS

Common Ground™ files (CGVM) - CGDC

JPEG (JIFF) files - JPEG

- Added autotype check for batching files,

if autotype of next file in the group dropped is different it will prompt you again.

---

Note that EOLs:

on DOS files are <CR><LF>(VAX also uses this EOL format)

on Mac files are <CR>,

on UNIX files are <LF>

---

BTW: The EOL convert code reads the entire file into memory at one time (it will use Finder temporary Memory if it is available), then does the conversion as the file, re-writing the file over top of the old file.

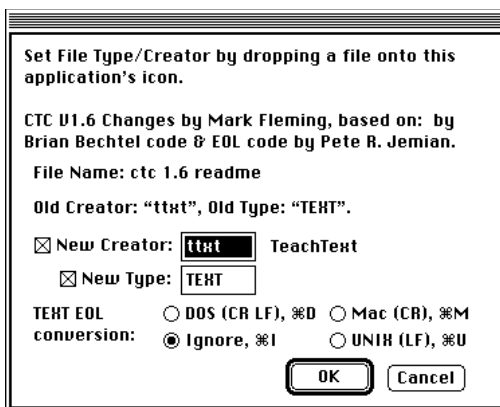
---

*WARNING: If you don't know what you are doing, things *could* get pretty fouled up UNDO is not supported. See the source code to determine *exactly* what is done.*

---

The problem that *could* occur is that you mistakenly select a non-TEXT file along with other TEXT files and convert them all to type TEXT *and* convert the EOL characters to the selection of your choice.

The dialog used to set the creator, type and select type of EOL conversion to apply to text files:



Note that the following information is displayed:

- the current setting of the file type and creator before any changes.
- option to only change the type, the creator or both
- try to locate the application assigned the creator you type in, by reading application name for Creators entered from DeskTop database if exists and display it next to create entered (in the above case "TeachText" match the creator "ttx").

One new hidden features is the read of the file's header and check for correct header for file of type: "PICT", "JPEG", "TIFF", "BMP", "GIF", and "EPSF" and suggest the correct Macintosh file type.